

Valid at as: 2021

## SPECIFICATION SHEET

### STICKS

#### General:

- ✓ Aiya Europe is not liable for the declaratory correctness etc.
- ✓ Special requests, custom colours, hot-foil embossing etc. are possible on an additional charge.

#### Visible area 1 may be used to display the following information:

- ✓ Your logo / your brand

#### Visible area 2 may be used to display the following data (must be legible at a glance):

- ✓ The product designation for the content (the generic product description, stating the exact nature and specific characteristics of the product, e.g. for ‚Matcha Green Tea‘ or ‚ground green tea‘. Attention: In English always Matcha Green Tea), not to be confused with the manufacturer’s (usually distinctive) brand or product name, which is mainly used to promote the product.
- ✓ Name and address of the company manufacturing or distributing the product. Food packaging must clearly show the name or company name and address of the company manufacturing or distributing the product. This is the name and address that consumers can contact in case of queries or complaints.
- ✓ The net content.

#### The following data must be included (irrespective on which label surface):

- ✓ Preparation / any other continuous text
- ✓ A bar code (if required) may also be printed upright.
- ✓ The sell-by or expiration date.

#### For organic products:

- ✓ The indication ‚non-EU agriculture‘ must appear immediately next to the EU organic logo. Alternatively, the indication may read ‚Japan Agriculture‘.
- ✓ The packaging must show the code number of the relevant control body or control authority (DE-ÖKO-xxx). The information must also appear immediately next to the EU organic logo. If we take over the labeling of the products for you, the following control office number must be given: DE-ÖKO-039
- ✓ The EU organic logo can be downloaded here: [http://ec.europa.eu/agriculture/organic/downloads/logo/index\\_de.htm](http://ec.europa.eu/agriculture/organic/downloads/logo/index_de.htm)

#### Design notes:

- ✓ Place any important information (logo / text) inside the grey surface.
- ✓ The design should cover the glue strip/overlapping (in case of motives running along the entire label) in order to avoid gaps.
- ✓ Once you have finished your label design, print out a sample label and check that it fits correctly around the tin.
- ✓ Creation of a proof is possible at additional cost. A proof is mainly intended to simulate a anticipated print result.

#### Information for the preparation of you print data:

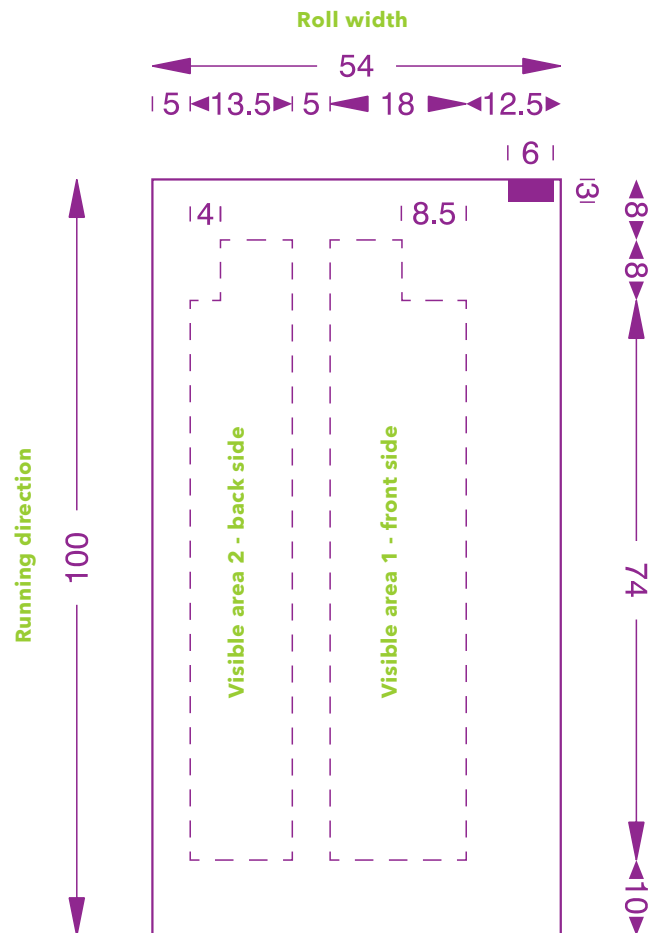
- ✓ Please send a PDF file, which contains the fonts embedded within the file.
- ✓ If this is not possible please send us open-format data from the program Adobe Indesign. Save the fonts as pathes and the images have to be enclosed.
- ✓ The format must be in original size.
- ✓ The trim box has to be on final cutting.
- ✓ The distance between text and logo has to be 3 mm.
- ✓ Remove non-printing elements (e.g. comments, form field, layers).
- ✓ Create print data in CMYK or as greyscale. No RGB (screen mode).
- ✓ Your image needs to have a minimum resolution of 300 dpi, line drawings 600 - 1200 dpi and save them as a bitmap (tif).
- ✓ Rich black surfaces should not just exist out of black. It should be 100% Black (K), 40% Cyan (C), 30% Magenta (M), 30% Yellow (Y). This ensures a rich black colour.
- ✓ The paint application of 280% colour may not be exceeded.
- ✓ Punching data must be delivered as a special colour.

Valid at as: 2021

## SPECIFICATION SHEET STICKS

### Layout template stick 1,5 bzw. 2g:

Drawings are not in scale.  
Please ask for original files.  
Entire area printable.

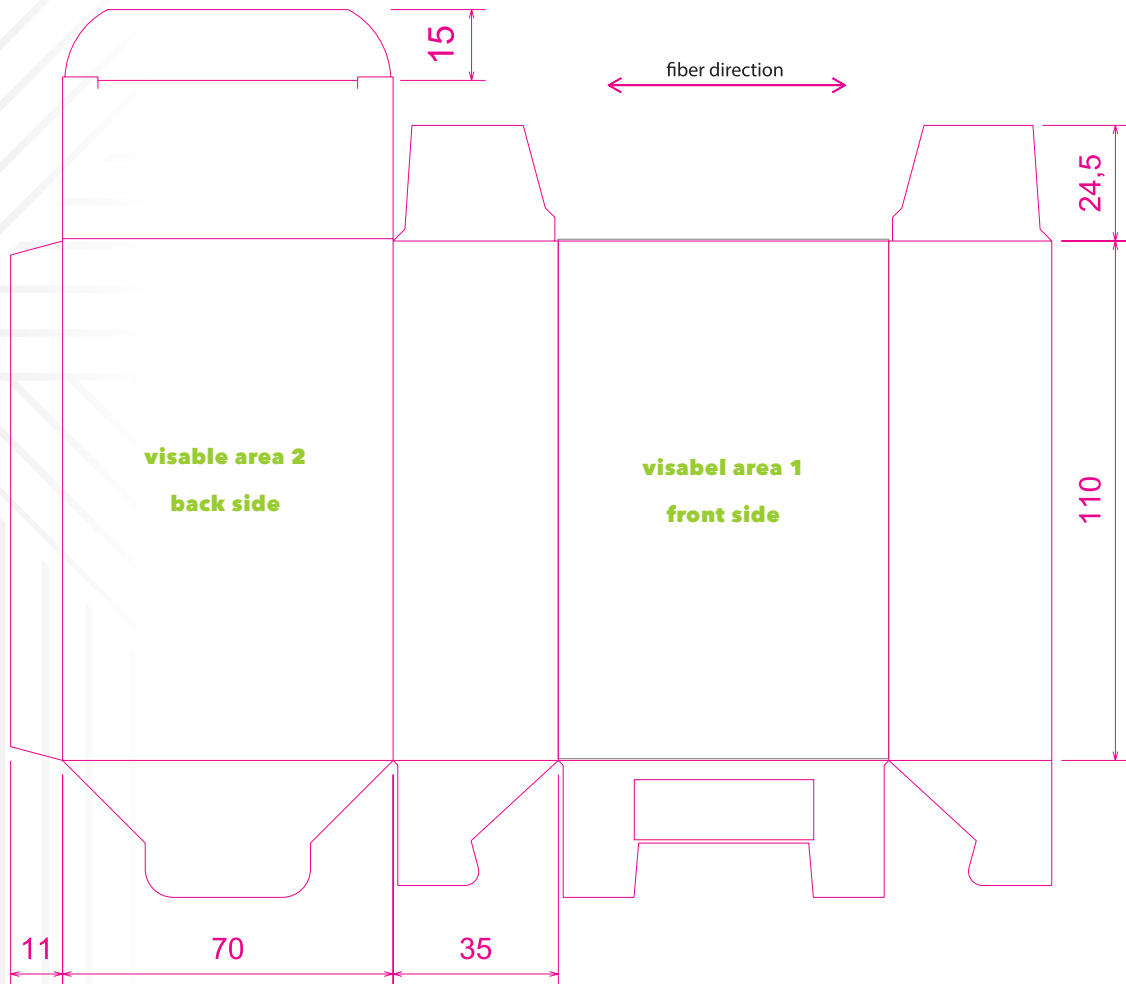


Valid at as: 2021

## SPECIFICATION SHEET STICKS

### Layout template folding box 10 x 1,5 bzw. 2g:

Drawings are not in scale.  
Please ask for original files.  
Entire area printable.



Valid at as: 2021

## SPECIFICATION SHEET STICKS

### Layout template tray 8 x 10 à 1,5 / 2 g:

Drawings are not in scale.

Please ask for original files.

Entire area printable - except marked areas.

